



WHITE-RODGERS

F61-2XXX

Adaptor Plate Assembly

INSTALLATION INSTRUCTIONS

Operator: Save these instructions for future use!

FAILURE TO READ AND FOLLOW ALL INSTRUCTIONS CAREFULLY BEFORE INSTALLING OR OPERATING THIS CONTROL COULD CAUSE PERSONAL INJURY AND/OR PROPERTY DAMAGE.

DESCRIPTION

This adaptor plate assembly is designed for mounting heating only, cooling only, or heating/cooling thermostats, such as the 1F30, 1F56, etc. This adaptor plate assembly can be used to mount either horizontal or

vertical thermostats to the wall or to a junction box. The wall cover plate covers the junction box, wall damage, or old thermostat markings. (Note: Some adaptor plate assembly kits may not contain the metal adaptor plate.)

PRECAUTIONS

⚠ CAUTION

To prevent electrical shock and/or equipment damage, disconnect electrical power at main fuse or circuit breaker until installation is complete.

NOTE

This instruction sheet is not intended as a wiring guide. Refer to the thermostat installation instructions to ensure proper wiring.

NOTE

Do not install the wall mounting plate and subbase at the same time. The thermostat will not operate properly if both the wall mounting plate and the subbase are installed.

For horizontal thermostats, mount as shown in the following illustrations. For vertical thermostats, rotate all parts 90° clockwise.

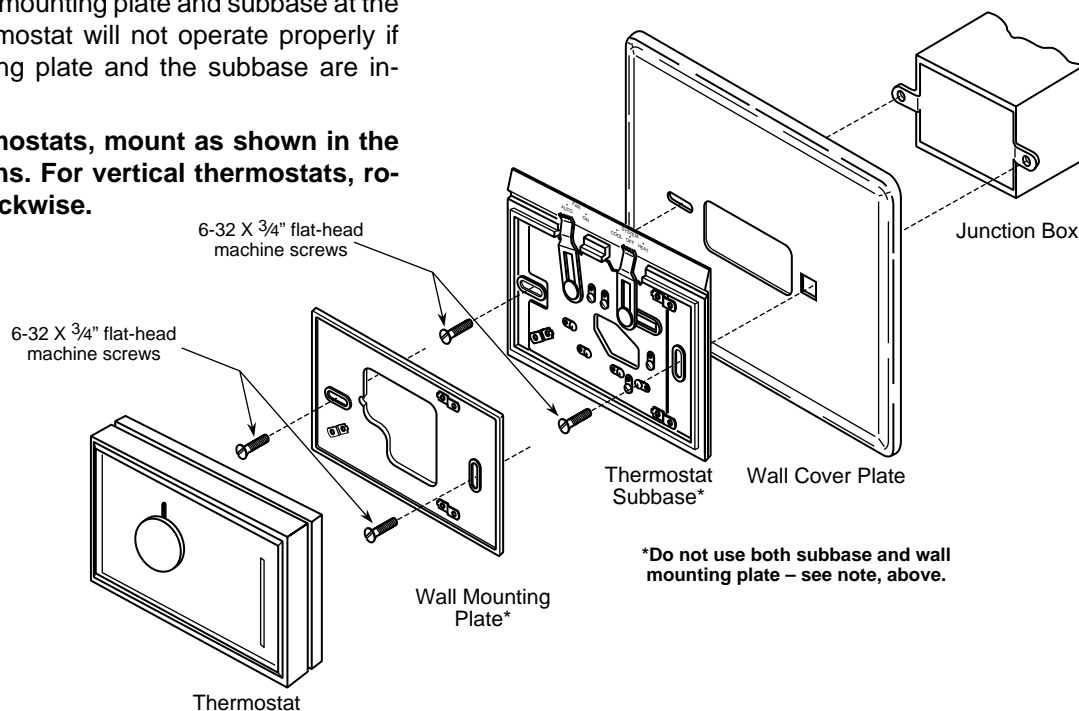


Figure 1. Mounting thermostat to horizontal junction box



WHITE-RODGERS DIVISION
EMERSON ELECTRIC CO.
9797 REAVIS ROAD
ST. LOUIS, MISSOURI 63123-5398

Printed in U.S.A.

PART NO. 37-5535A

9524

INSTALLATION (cont'd)

NOTE

Do not install the wall mounting plate and subbase at the same time. The thermostat will not operate properly if both the wall mounting plate and the subbase are installed.

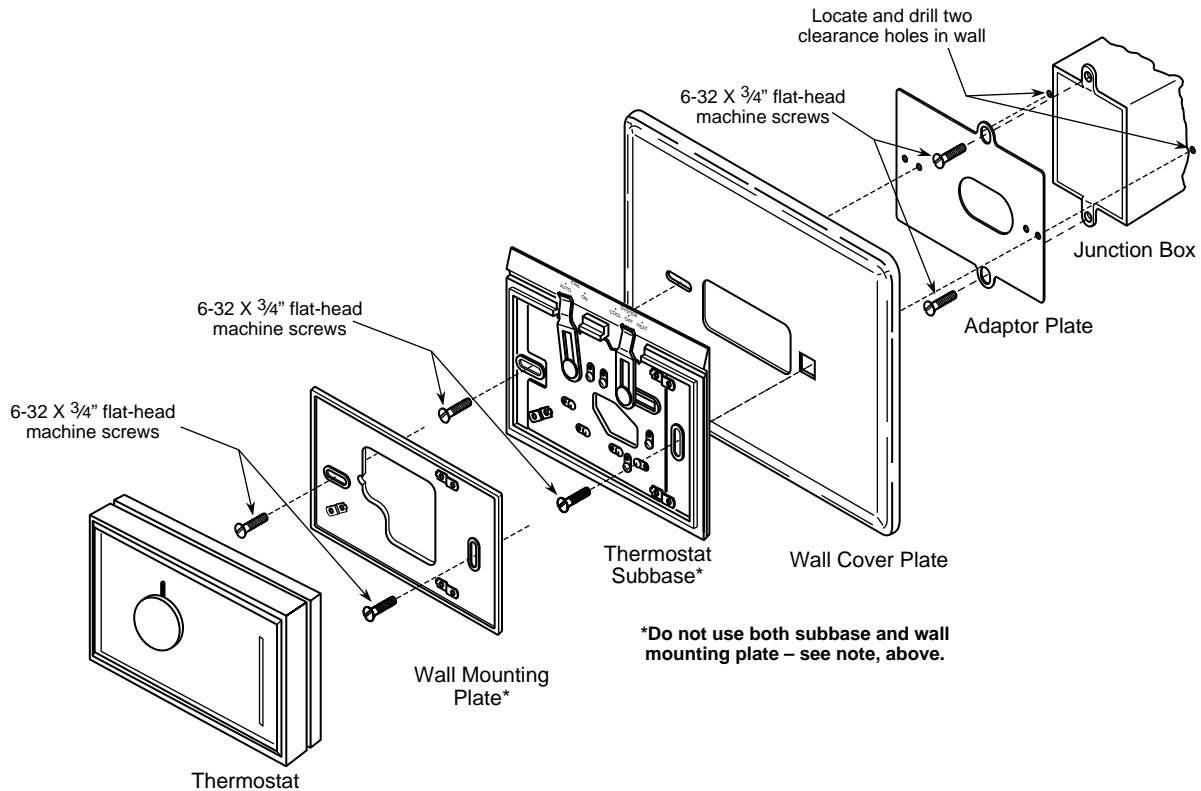


Figure 2. Mounting thermostat to vertical junction box

NOTE

When installing the wall cover plate and thermostat directly to the wall, use the pointed screws supplied with the thermostat.

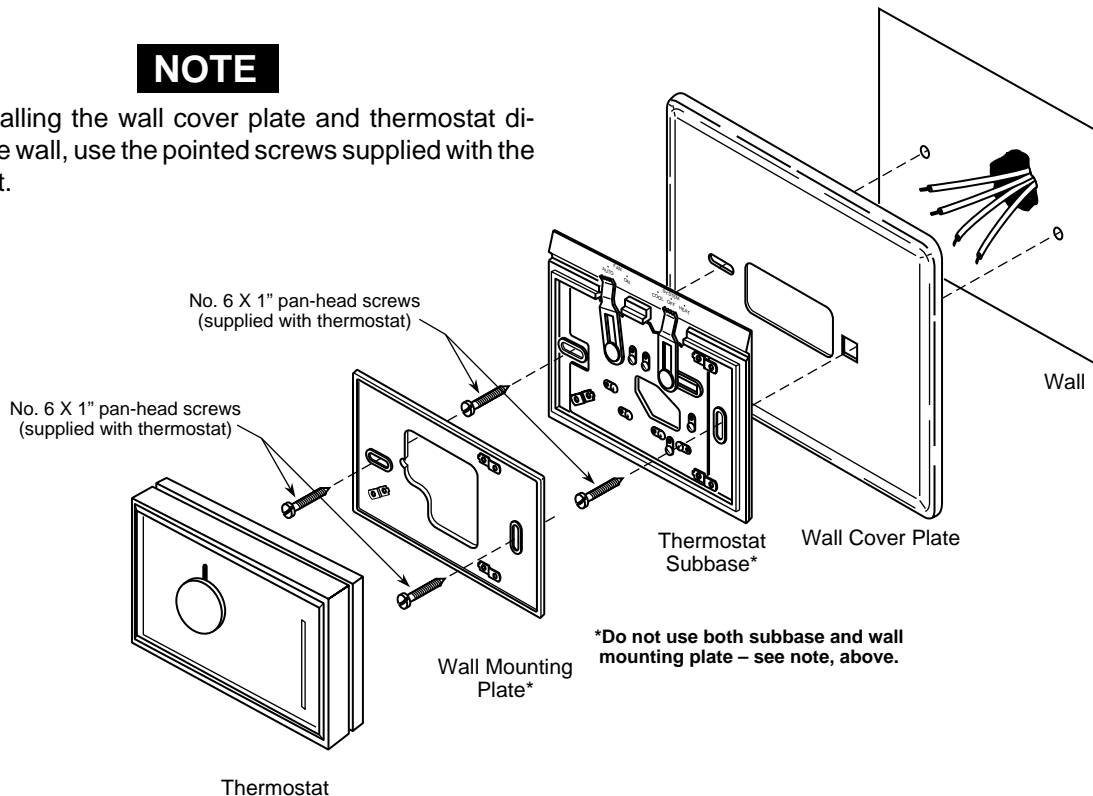


Figure 3. Mounting thermostat to wall